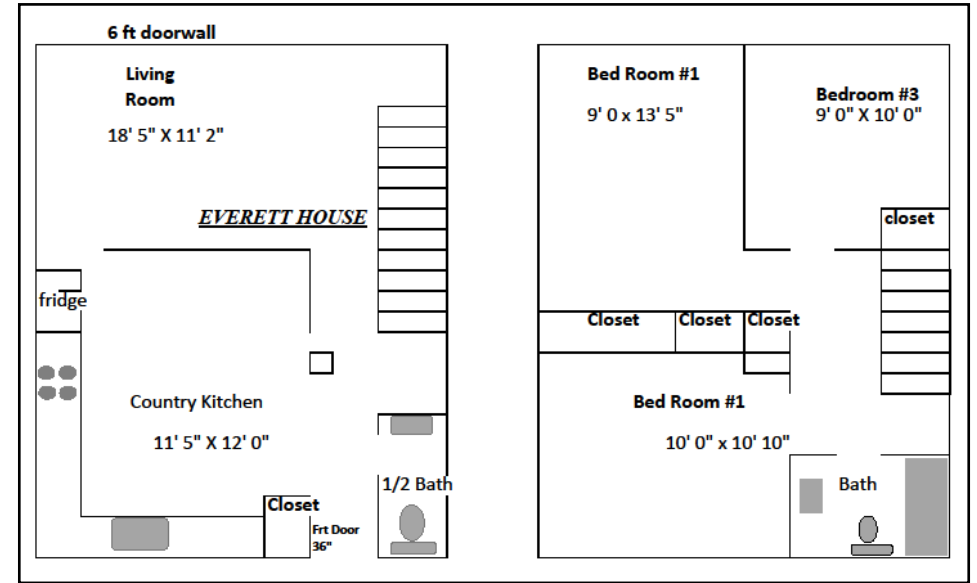
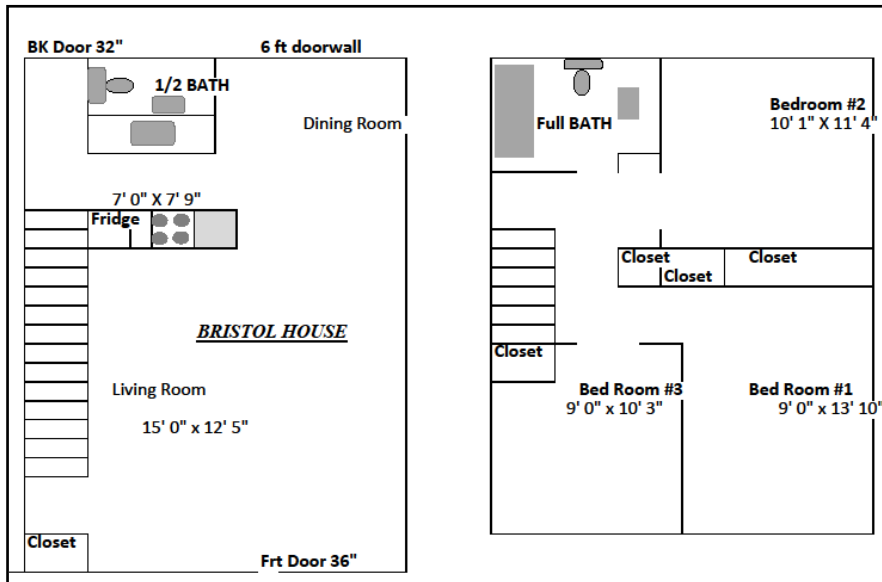


↑ Gloucester House 3 bedroom without a Basement Current Carrying Charges \$480



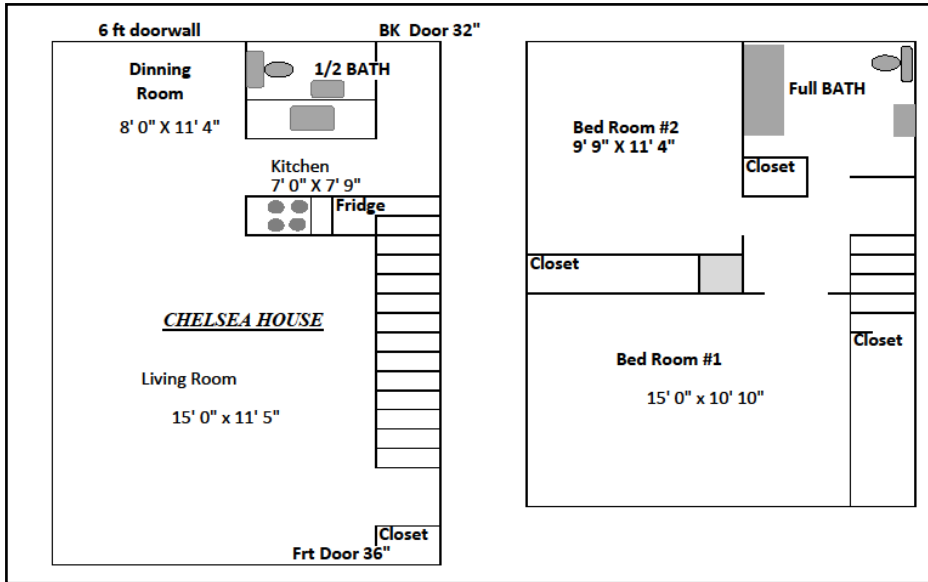
Everett House 3 bedroom with a Basement Current Carrying Charges \$493 ↑



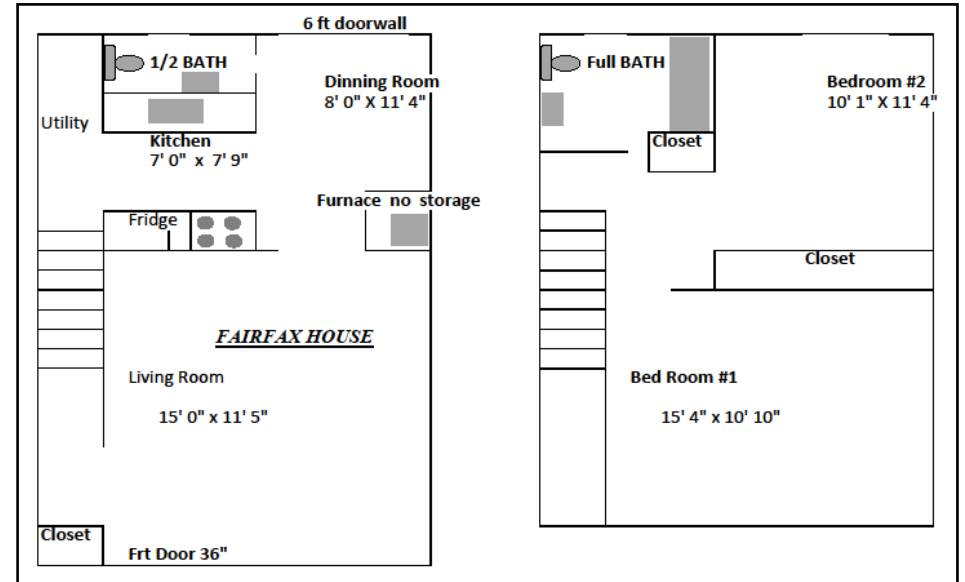
↑ Bristol House 3 bedroom with a Basement Current Carrying Charges \$493

**These are Sample Layouts
of all 7 styles offered here at
Williamsburg Townhouses Coop**

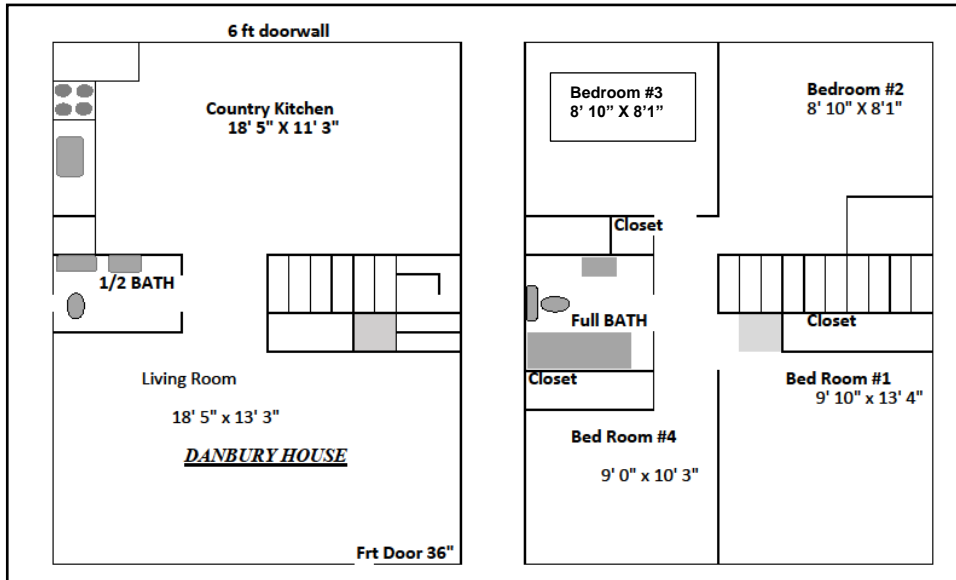




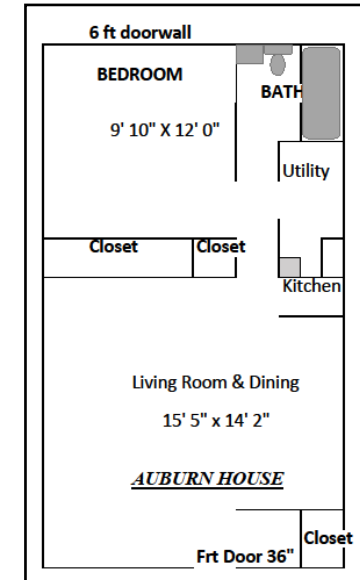
Chelsea House 2 Bedroom with Basement Current Carrying Charges \$486 ↑



Fairfax House 2 Bedroom without a Basement Current Carrying Charges \$472 ↑



Danbury House 4 bedroom with Basement Current Carrying Charges \$509 ↑



Auburn House one bedroom without a basement Current Carrying Charges \$459 ↑